

Environmentally Conscious Projects:

Targeting decision based on costs and benefits

Lianne Allen-Jacobson
Ya'eli Rosenberg
Brian Gervelis

Intro

Many wind developers strive to develop solutions conscious of the environment by minimizing their footprint, using less concrete, and create structures that provide a **net ecological benefit**.

While nature-based enhancements appeal to stakeholders, these enhancements add costs with uncertain outcomes. Therefore, the following use-cases illustrate an approach that can reduce this uncertainty.

Methods

INSPIRE provides credible, defensible science in support of offshore wind development by prioritizing non-invasive tools in environmental monitoring.

ECONcrete engineers innovative, ecological concrete solutions, to meet strict compliance standards, provide durable infrastructure, and enhance ecosystems.



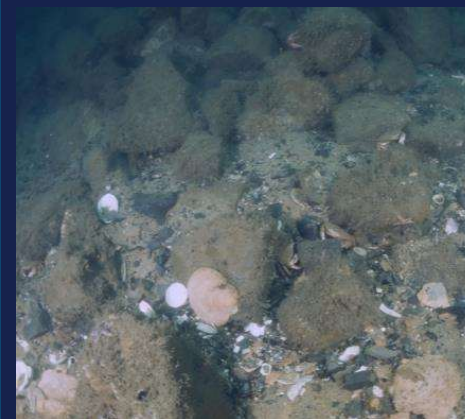
Case 1: Secondary enhancements can enhance marine resources and mitigate conflict with fisheries, when informed by ecologically meaningful monitoring



Case 2: Nature-based structures can facilitate project progression in or near protected habitat, where site condition would preclude standard construction materials



Case 3: Environmentally conscious projects can appeal to the public and facilitate project progression by demonstrating the developer is acting in good faith to benefit the environment.



Case 4: Developers can selectively implement nature-based design, in areas that would benefit most from augmentations, as informed by ecologically meaningful monitoring.

Discussion

These use-cases identify projects best suited for environmentally conscious projects. Nevertheless, clear regulations will improve outcomes of environmentally conscious projects by setting targets, providing oversight, and incentivizing participation.

Learn more about our approach to non-invasive monitoring for fisheries and benthic habitat



Discover our scientifically validated solutions that enhance ecosystems and infrastructure



For more information, please contact:

Marine Growth Monitoring & Inspections
Lianne@INSPIREenvironmental.com

Fisheries Surveys
Brian@INSPIREenvironmental.com

Ecological Concrete Solutions
Ya'eliR@econcretetech.com

